

UBL9H



Light Efficiency:

31 Lumen/Watt

Light Quality:

CRI: 62.4

Color Temperature:

9060 K

Output: 1711 lm

Peak: 7294 cd

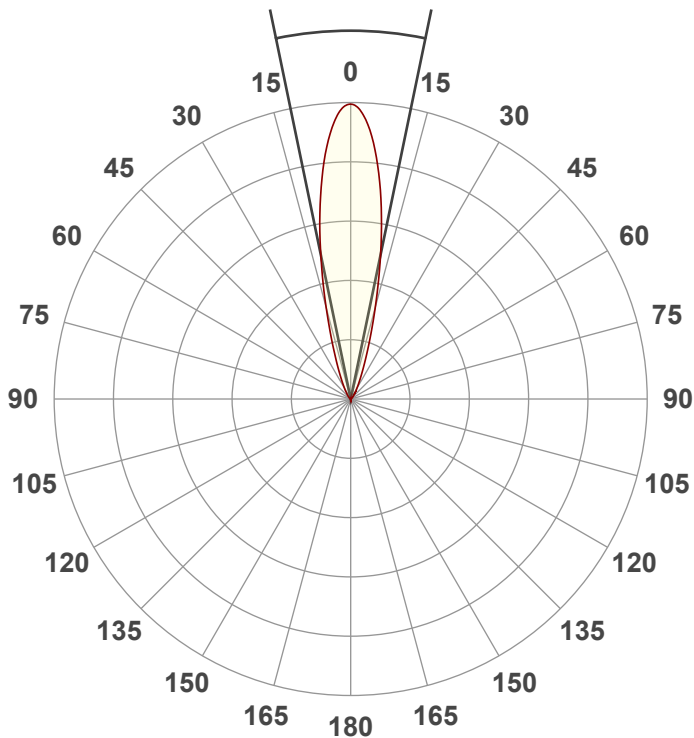
Power: 55.1 W

PF: 0.59



Beam Angle

23.4°



Test:

Frost Filter Full On

Date:

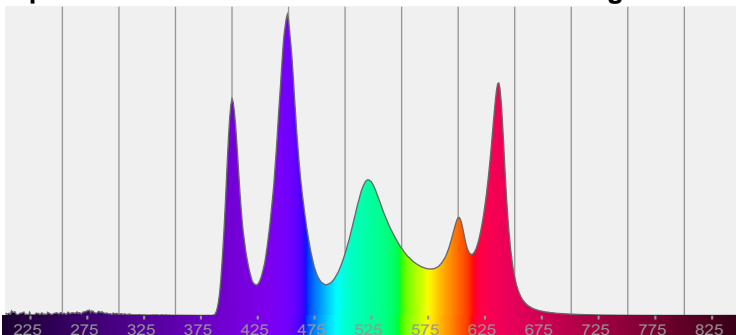
2/8/2024

Note:

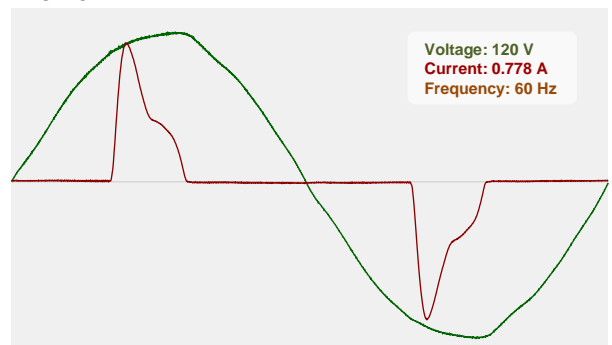
CIE 1931
x: 0.298
y: 0.268

Spectra

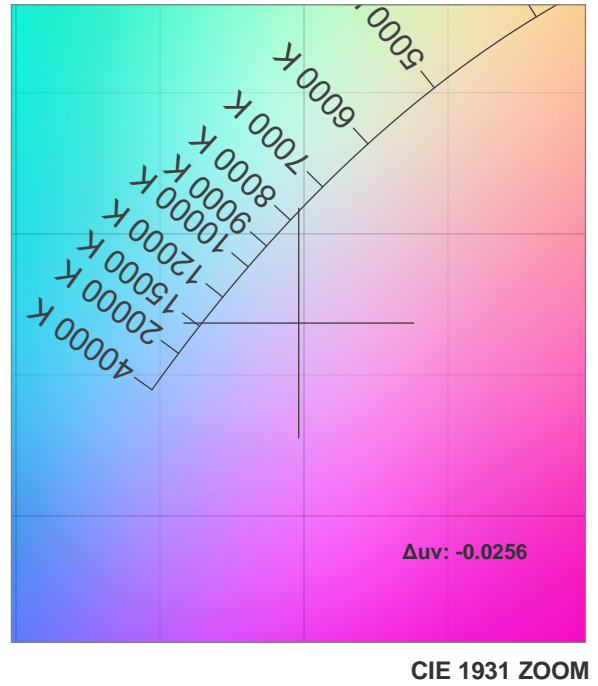
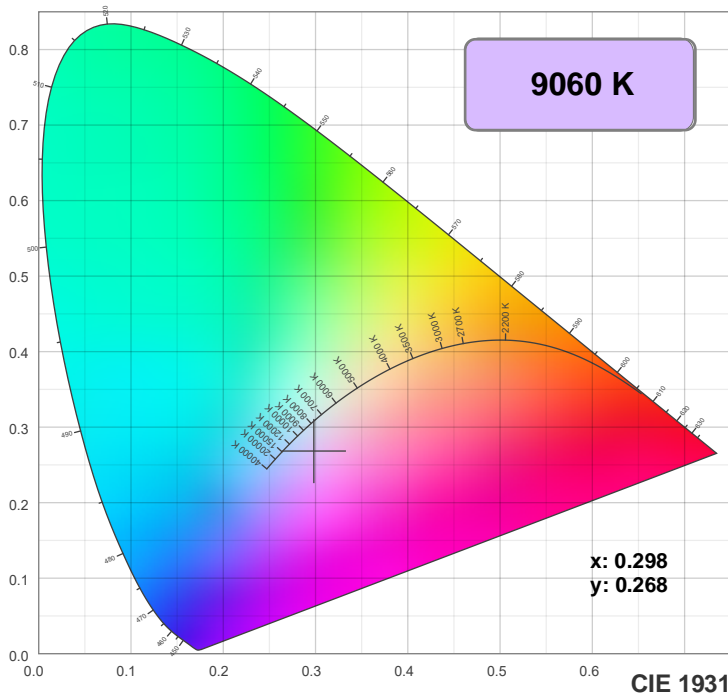
Dominant Wavelength: 360nm



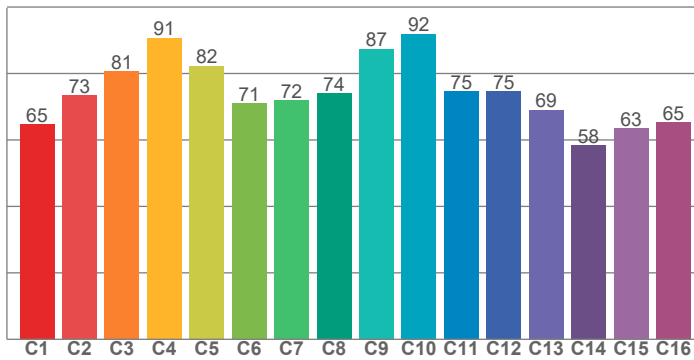
Power



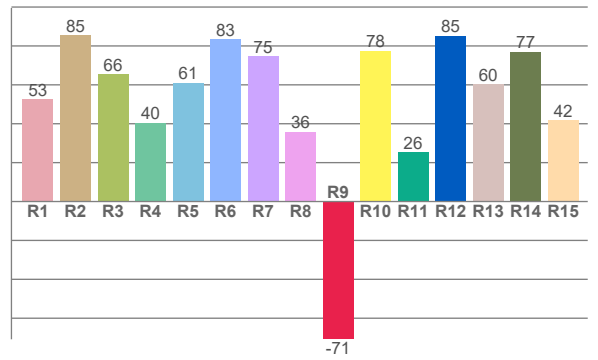
Color Details



TM30: 76.2



CRI: 62.4 (R1-R8)



CRI R values, only R1-R8 are used to calculate final CRI value

R1	R2	R3	R4	R5	R6	R7	R8	R9	R10	R11	R12	R13	R14	R15
52.6	85.4	65.6	40.5	61.0	83.4	74.7	36.0	-70.8	77.6	25.5	85.3	60.3	77.1	41.8

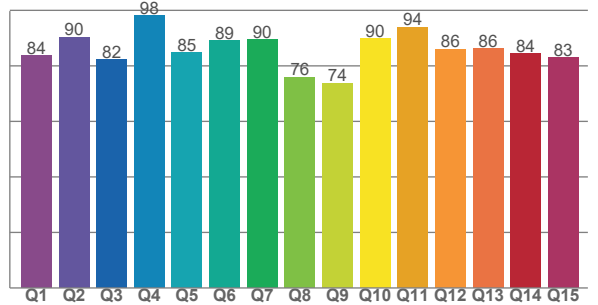
TM30 C values, 16 binned values out of total of 99 C values

C1	C2	C3	C4	C5	C6	C7	C8	C9	C10	C11	C12	C13	C14	C15	C16
64.7	73.4	80.6	90.7	82.3	70.9	71.9	73.9	87.4	92.0	74.6	74.5	69.0	58.4	63.4	65.3

CQS Q values

Q1	Q2	Q3	Q4	Q5	Q6	Q7	Q8	Q9	Q10	Q11	Q12	Q13	Q14	Q15
83.8	90.3	82.2	98.0	84.7	89.0	89.5	75.9	73.8	89.7	93.9	86.1	86.3	84.4	83.0

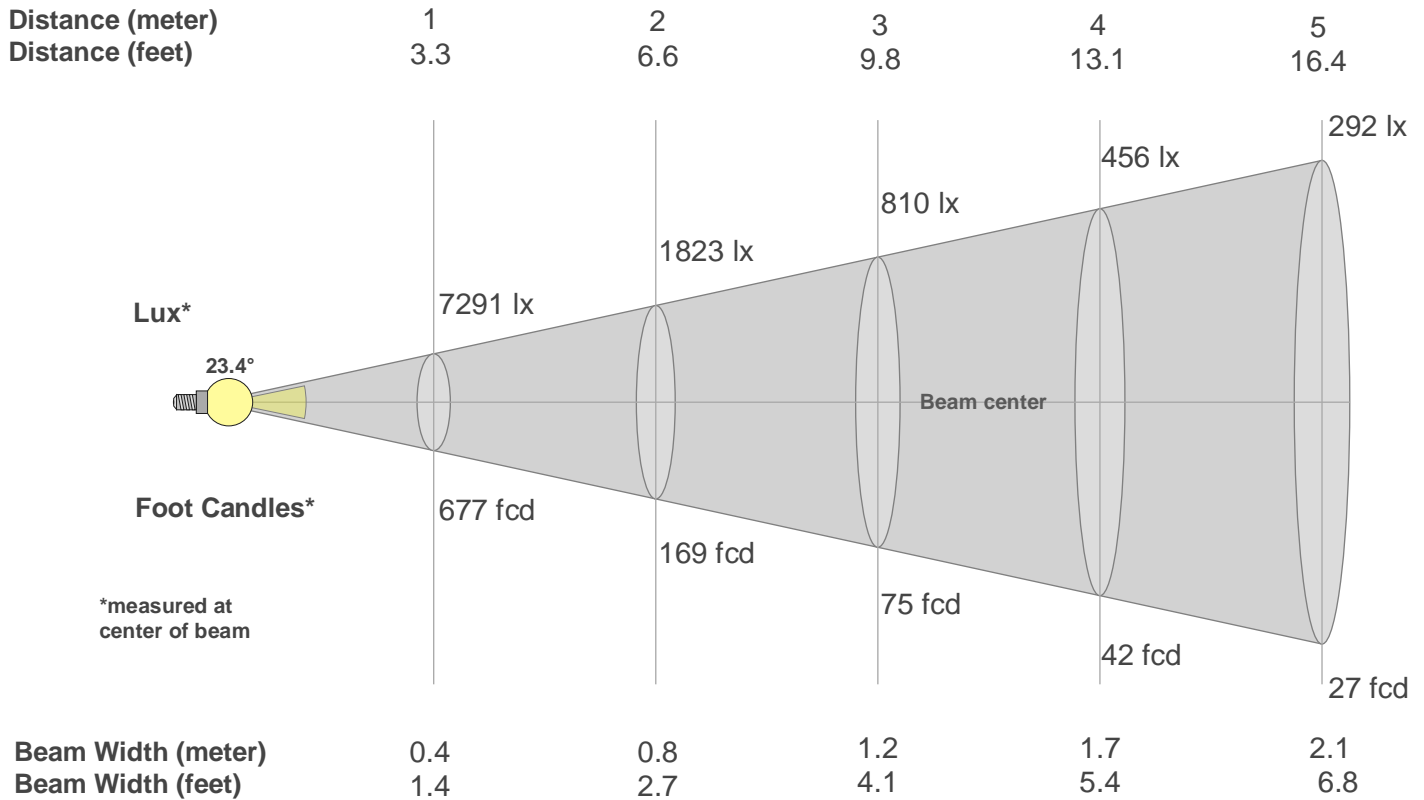
CQS: 84.8



Color Parameters

Color Temperature	Color Rendering Index	Red Component	Color Fidelity	Color Gamut	Color Quality Scale	Color Coordinate CIE 1931	Color Coordinate CIE 1931	Color Coordinate	Color Coordinate	Color Deviation from Black Body
CCT	CRI	CRI R9	TM30 Rf	TM30 Rg	CQS	x	y	u	v	Δuv
9060 K	62.4	-70.8	76.2	121.7	84.8	0.298	0.268	0.212	0.286	-0.0256

Beam Details



Beam Intensities from 1-20m

m	1	2	3	4	5	6	7	8	9	10	11	12	13	14	15	16	17	18	19	20
ft	3.3	6.6	9.8	13.1	16.4	19.7	23	26.2	29.5	32.8	36.1	39.4	42.7	45.9	49.2	52.5	55.8	59.1	62.3	65.6
lx	7291	1823	810	456	292	203	149	114	90	73	60	51	43	37	32	28	25	23	20	18
fcd	677.3	169.3	75.3	42.3	27.1	18.8	13.8	10.6	8.4	6.8	5.6	4.7	4	3.5	3	2.6	2.3	2.1	1.9	1.7

Intensities in 0° C-plane

0°	2°	4°	6°	8°	10°	12°	14°	16°	18°	20°	22°	24°	26°	28°	30°	32°	34°	36°	38°
7291	7147	6706	6060	5260	4407	3519	2721	2020	1497	1106	836	635	493	384	304	243	189	160	136
100%	98%	92%	83%	72%	60%	48%	37%	28%	21%	15%	11%	9%	7%	5%	4%	3%	3%	2%	2%

Intensities in 90° C-plane

0°	2°	4°	6°	8°	10°	12°	14°	16°	18°	20°	22°	24°	26°	28°	30°	32°	34°	36°	38°
7291	7147	6706	6060	5260	4407	3519	2721	2020	1497	1106	836	635	493	384	304	243	189	160	136
100%	98%	92%	83%	72%	60%	48%	37%	28%	21%	15%	11%	9%	7%	5%	4%	3%	3%	2%	2%

Intensities in 180° C-plane

0°	2°	4°	6°	8°	10°	12°	14°	16°	18°	20°	22°	24°	26°	28°	30°	32°	34°	36°	38°
7291	7127	6689	6037	5255	4389	3521	2713	2037	1510	1122	843	645	499	391	309	249	201	166	143
100%	98%	92%	83%	72%	60%	48%	37%	28%	21%	15%	12%	9%	7%	5%	4%	3%	3%	2%	2%

Intensities in 270° C-plane

0°	2°	4°	6°	8°	10°	12°	14°	16°	18°	20°	22°	24°	26°	28°	30°	32°	34°	36°	38°
7291	7127	6689	6037	5255	4389	3521	2713	2037	1510	1122	843	645	499	391	309	249	201	166	143
100%	98%	92%	83%	72%	60%	48%	37%	28%	21%	15%	12%	9%	7%	5%	4%	3%	3%	2%	2%

Beam Angle 50%	Field Angle 10%	Cutoff Angle 2,5%	Intensity Ratio in 120° Cone	Intensity Ratio in 90° Cone
23.4°	46°	69.3°	98.4%	94.9%